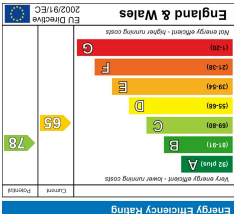
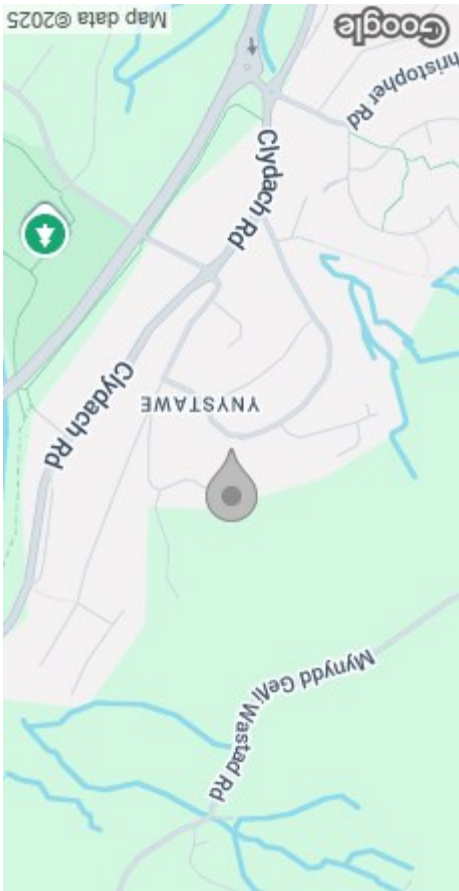


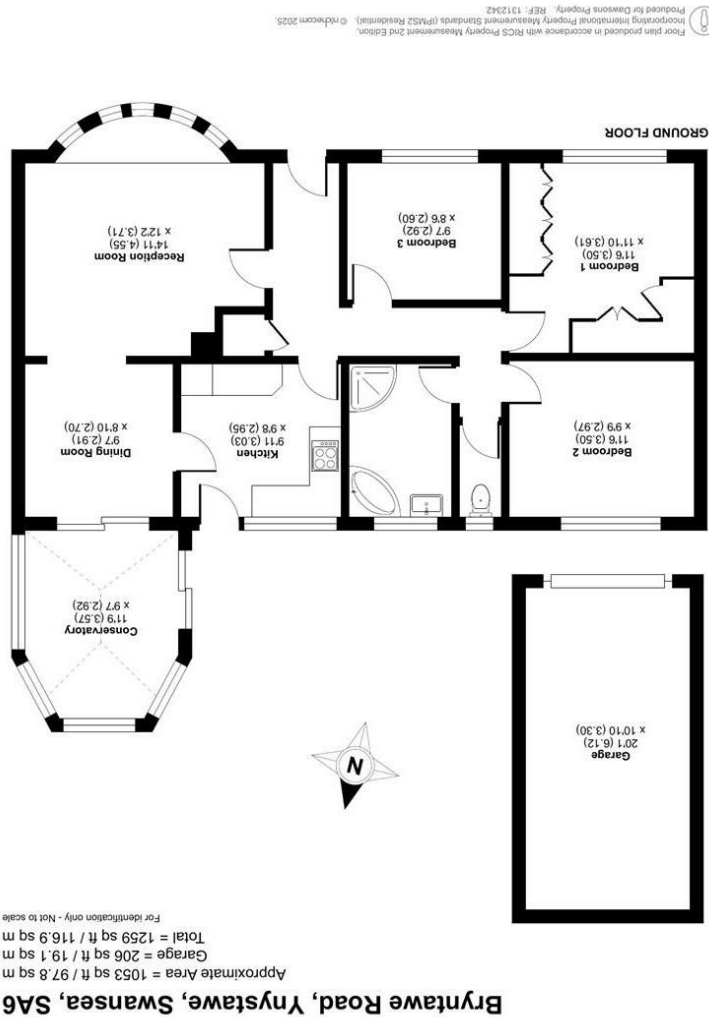
These particulars, whilst believed to be accurate are set out as a general outline only for guidance and do not constitute any part of an offer or contract. Intending purchasers should not rely on them as statements or representations of fact, but must satisfy themselves by inspection or otherwise as to their accuracy. No person in this firm's employment has the authority to make or give any representation or warranty in respect of the property.



EPC



AREA MAP



Bryntawe Road, Ynystawe, Swansea, SA6

FLOOR PLAN



GENERAL INFORMATION

Situated on Bryntawe Road in the charming area of Ynystawe, Swansea, this beautifully presented detached bungalow offers a delightful blend of comfort and style. With two spacious reception rooms, this home provides ample space for relaxation and entertaining. The three well-appointed bedrooms are perfect for restful nights, while the family bathroom ensures convenience for daily living.

One of the standout features of this property is the lovely conservatory, which invites natural light and offers a serene space to enjoy the surrounding views. The well-maintained enclosed rear garden is an ideal retreat for outdoor enthusiasts, providing a private area for gardening, relaxation, or social gatherings.

For those with vehicles, the property boasts a driveway and a garage, ensuring that parking is never a concern. Additionally, the absence of a chain means a smoother transition for potential buyers, allowing for a quicker move-in process.

FULL DESCRIPTION

Entrance

Hallway

Reception Room
14'11 x 12'2 (4.55m x 3.71m)

Dining Room
9'7 x 8'10 (2.92m x 2.69m)

Conservatory
11'9 x 9'7 (3.58m x 2.92m)

Kitchen
9'11 x 9'8 (3.02m x 2.95m)



Bathroom

Bedroom One
11'6 x 11'10 (3.51m x 3.61m)

Bedroom Two
11'6 x 9'9 (3.51m x 2.97m)

Bedroom Three
9'7 x 8'6 (2.92m x 2.59m)

External

Parking
Driveway and garage (20'1 x 10'10)

Council Tax Band
F

EPC
D

Tenure
Freehold

Services
Mains electricity, gas, water (metered) and sewerage. You are advised to refer to the Ofcom checker for information regarding mobile signal and broadband coverage, as, due to the property being vacant, we cannot confirm availability.

